

WESTREC MARINA MANAGEMENT, INC.  
ON BEHALF OF THE CHICAGO PARK DISTRICT

---

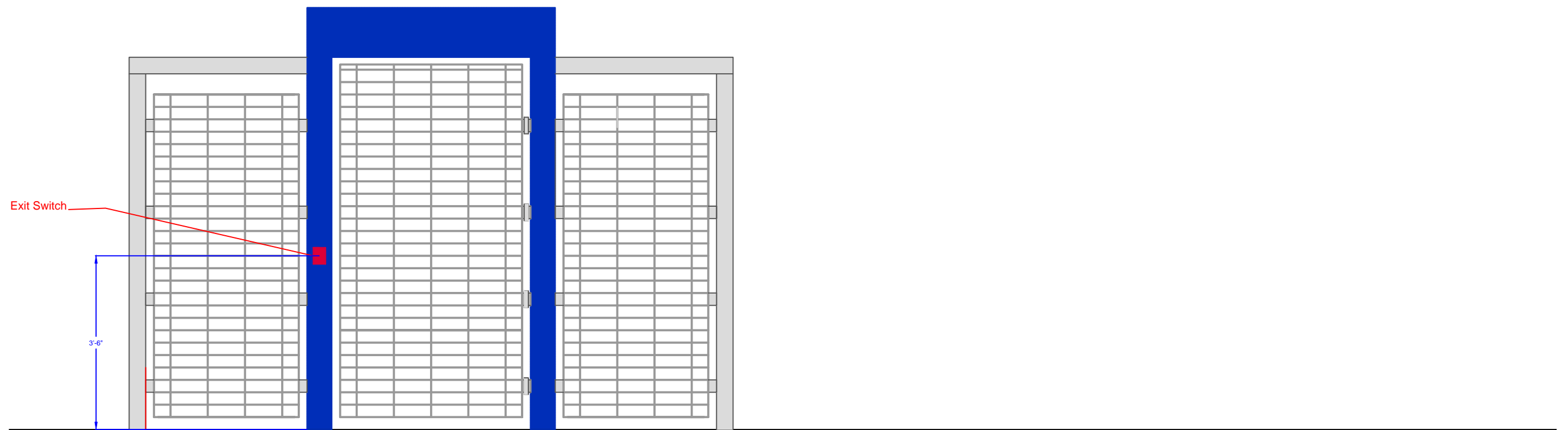
---

**INVITATION FOR BID (IFB)**  
**FOR**  
**CONSTRUCTION OF BURNHAM HARBOR DOCK GATES**

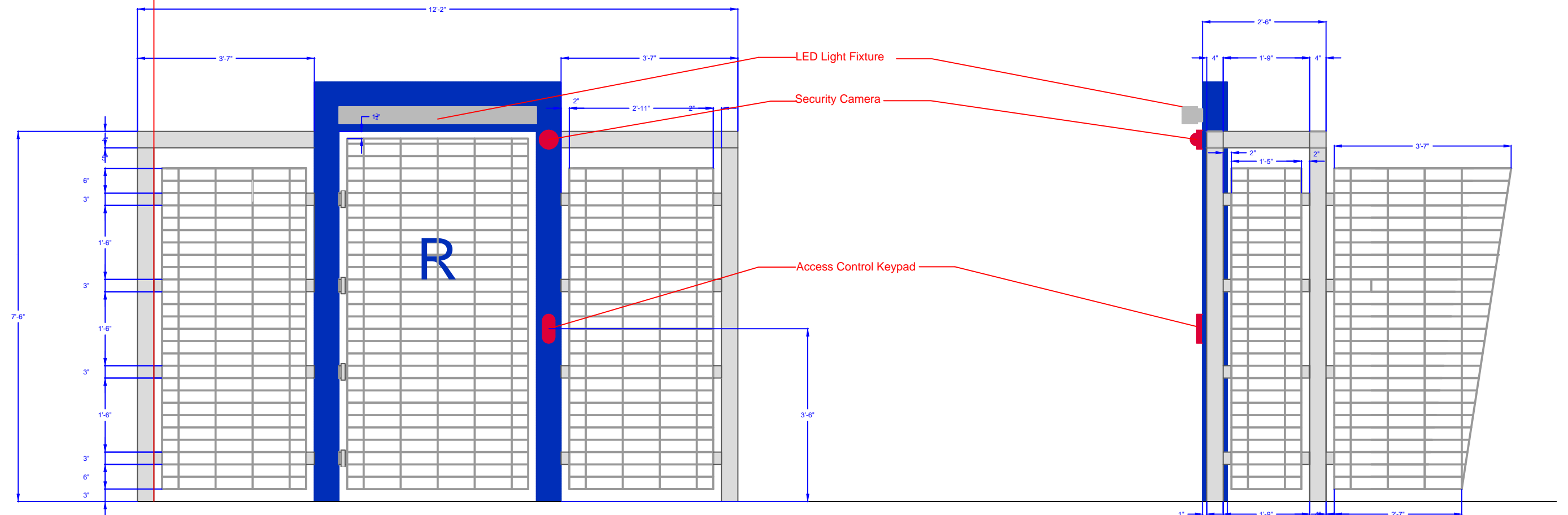
---

---

**W-20003**  
**TECHNICAL SPECIFICATIONS**



## REAR VIEW



## FRONT VIEW

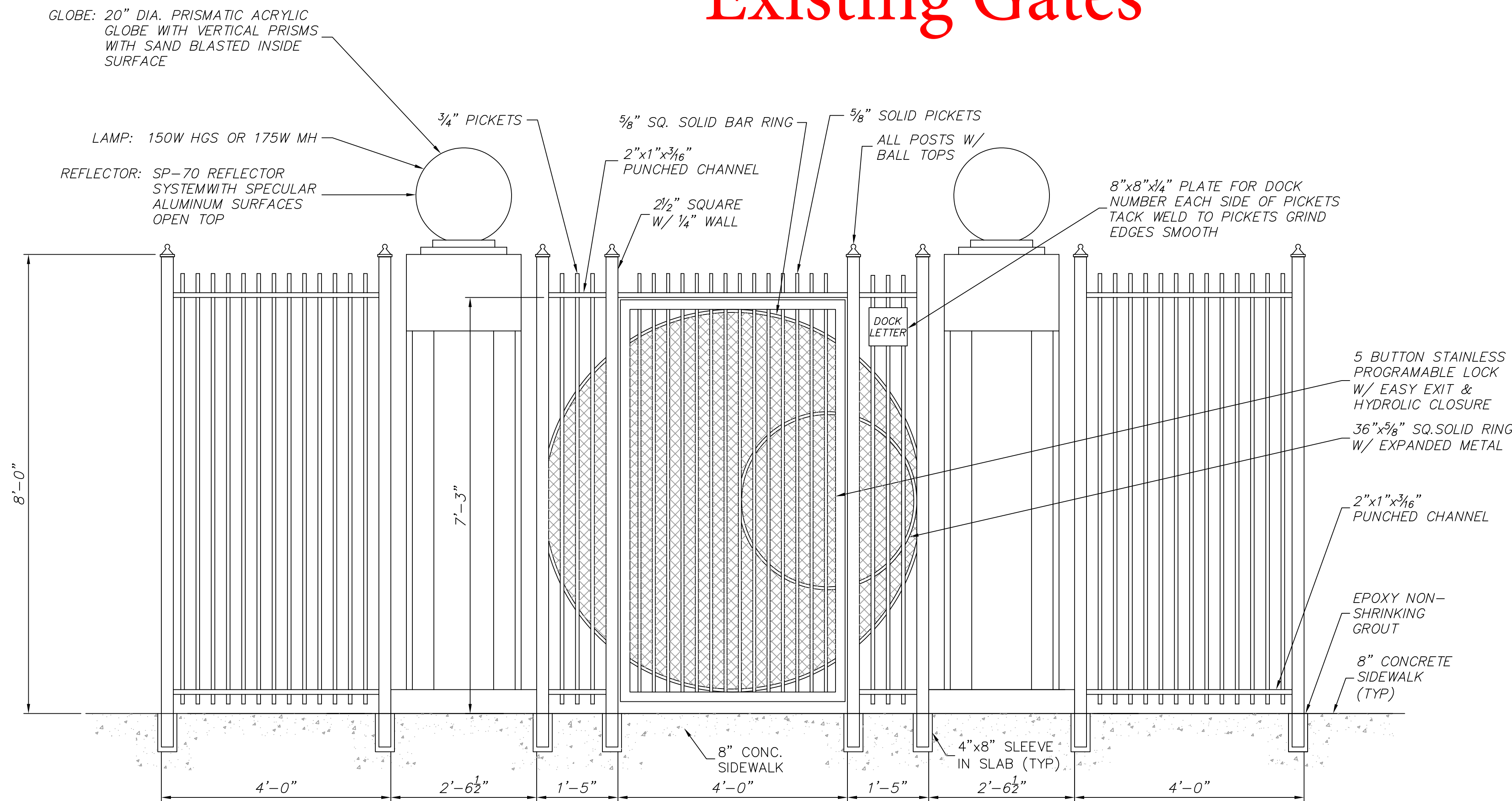
## SIDE VIEW



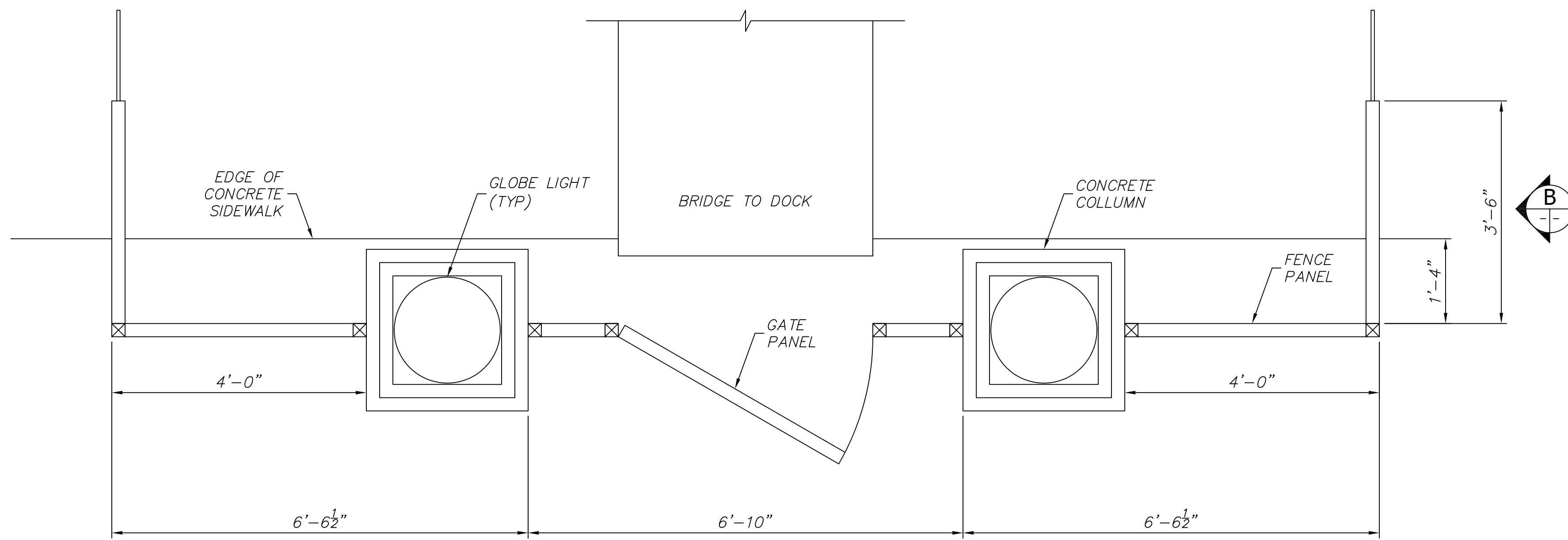
---



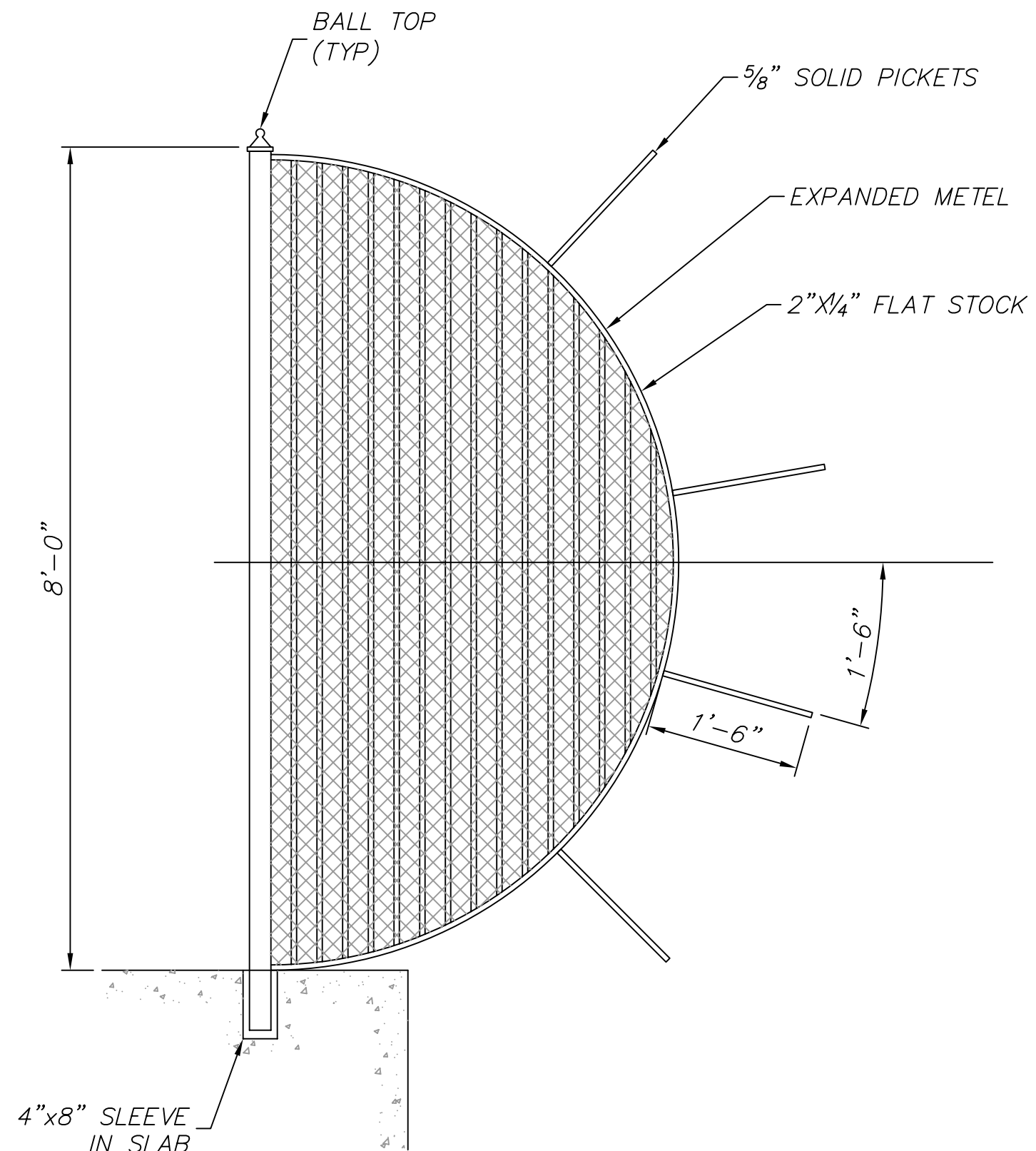
Existing Gates



ELEVATION 'A'  
SCALE: 3/4" = 1'-0"



GATE PLAN  
SCALE: 3/4" = 1'-0"



ELEVATION 'B'  
SCALE: 3/4" = 1'-0"



CHICAGO  
PARK  
DISTRICT

541 N. Fairbanks Ct.  
Chicago, Illinois 60611  
Ph. 312-742-8520

E	
D	
C	
B	
A	
REVISIONS	DATE

PROJECT MANAGER:  
WESTREC MARINA  
MANAGEMENT, INC.  
541 N. FAIRBANKS CT.,  
SUITE 1020  
CHICAGO, IL 60611  
(312) 747-0737  
westrec  
@westrecchicago.com

DRAWN:
CHECKED:
SCALE: SEE DWG
DATE:
SPEC. NO.:
W.O. NO.:
SHEET INFORMATION

BURNHAM  
HARBOR  
MARINA  
EXTENSIONS

PARK NO./PROJECT NO.

G-1.0

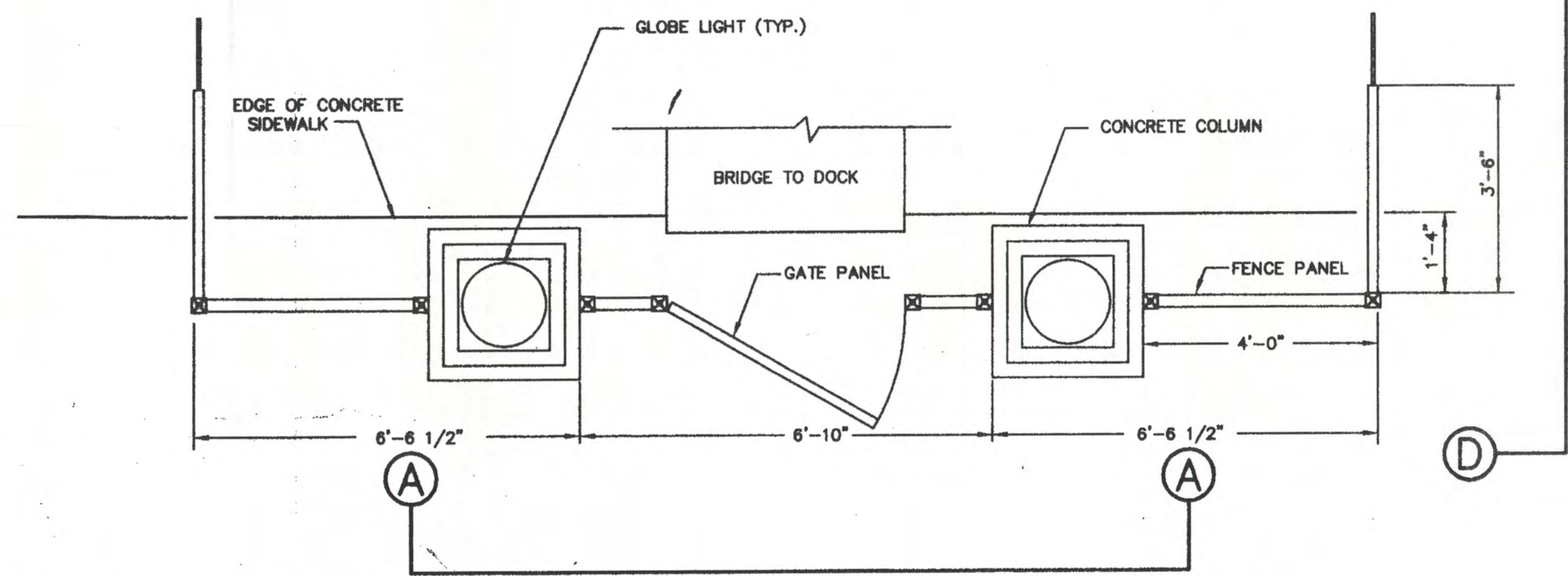
DRAWING NO.

© CHICAGO PARK DISTRICT

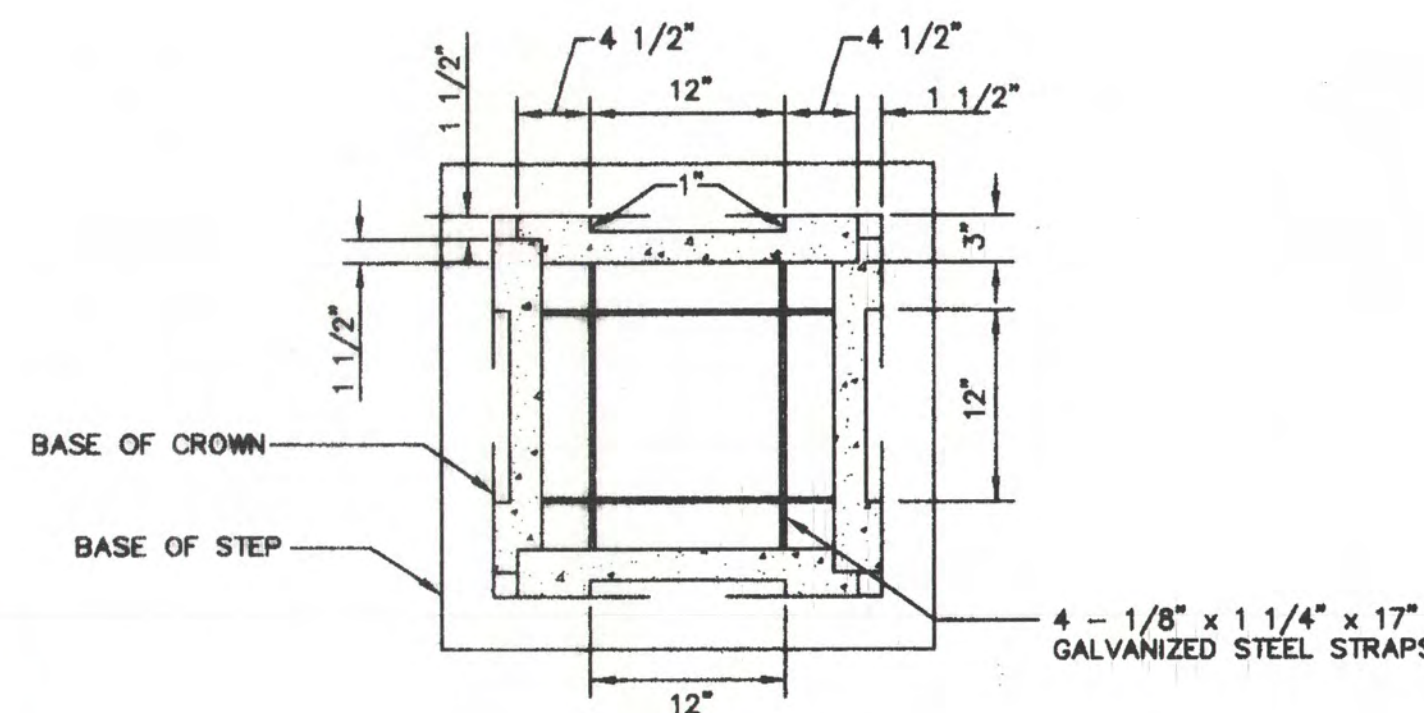
1 GATE DETAILS  
SCALE: 3/4"=1'-0"



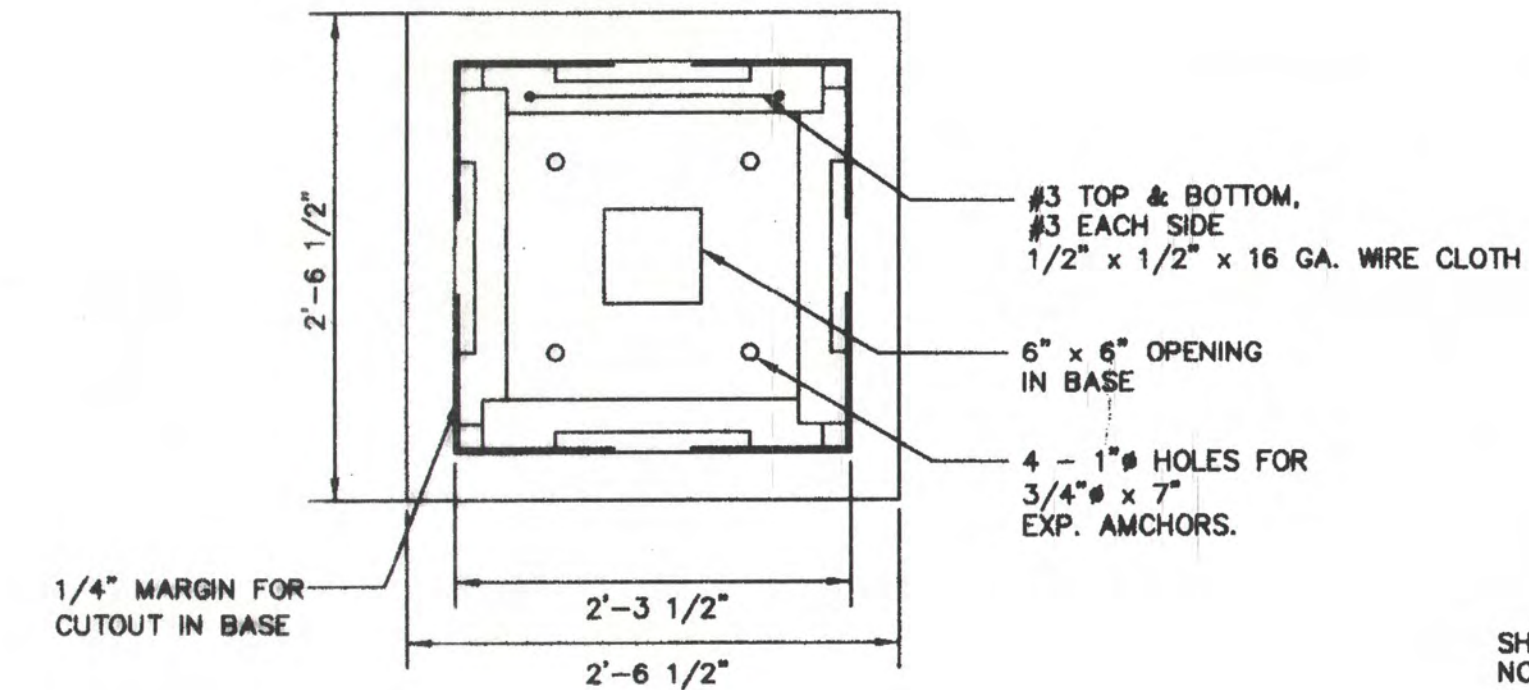
# Existing Gates



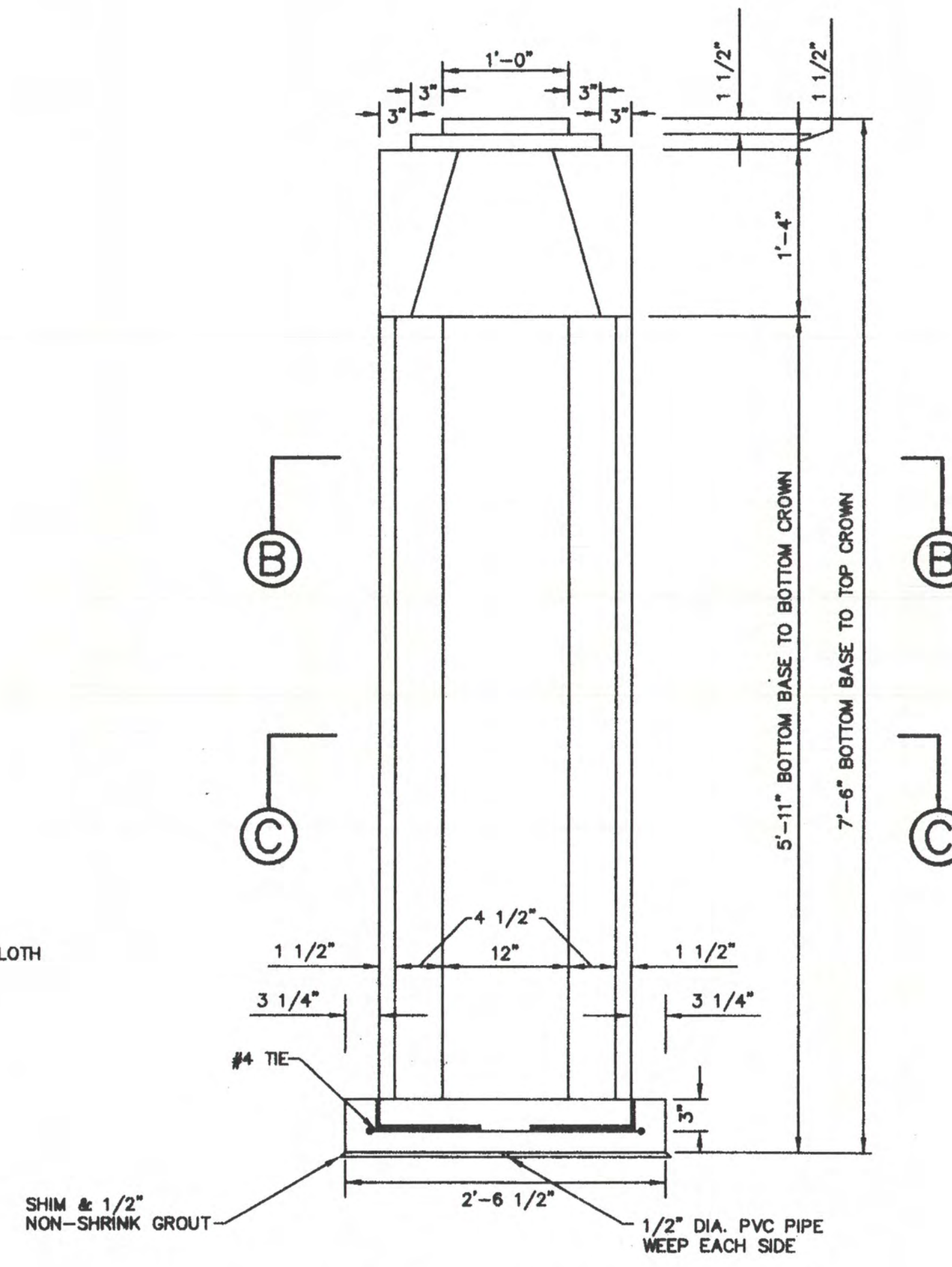
① PLAN VIEW - HARBOR GATE  
SCALE: 1/2" = 1'-0"



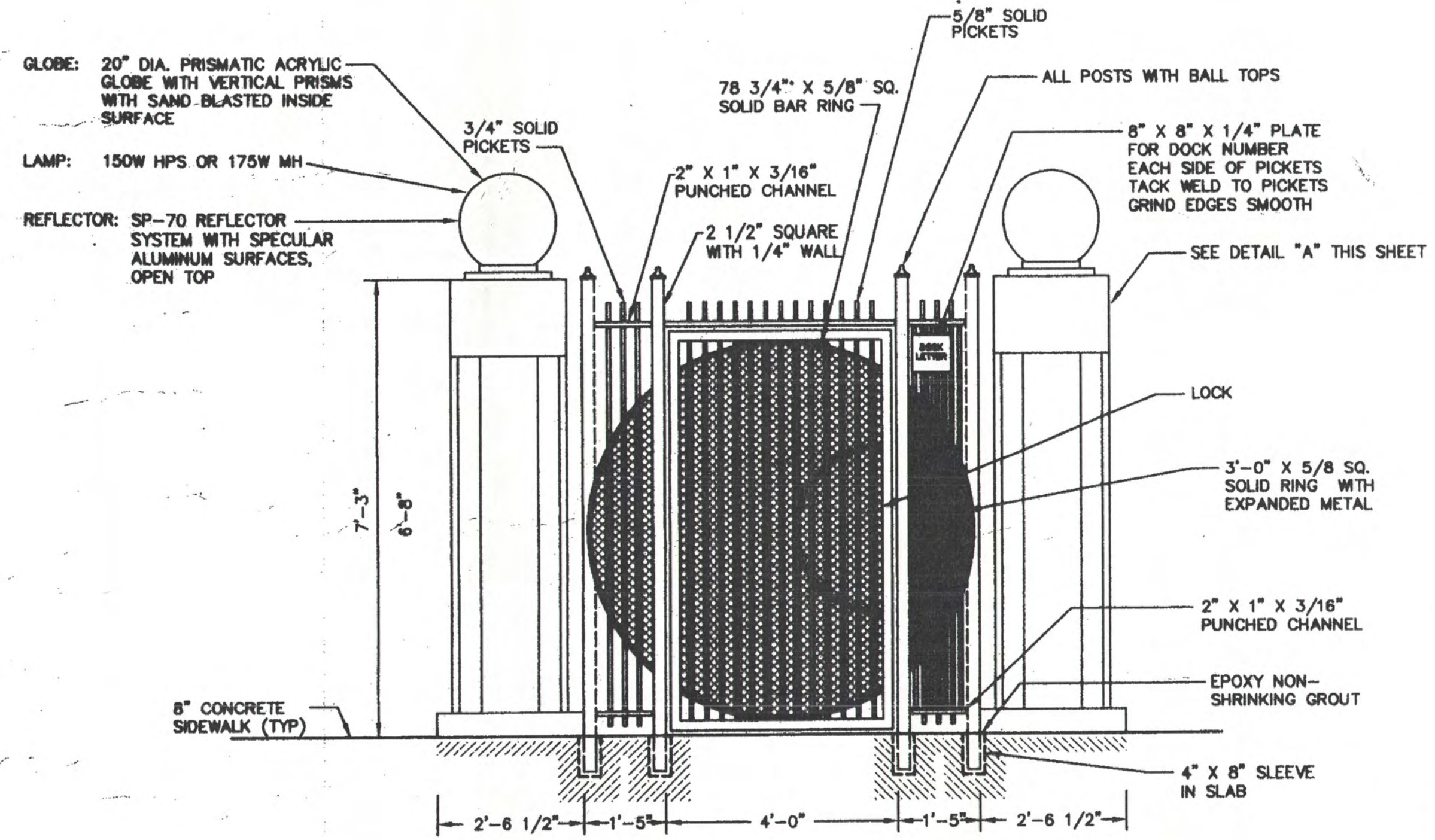
SECTION B-B  
SCALE: 1/4" = 1'-0"



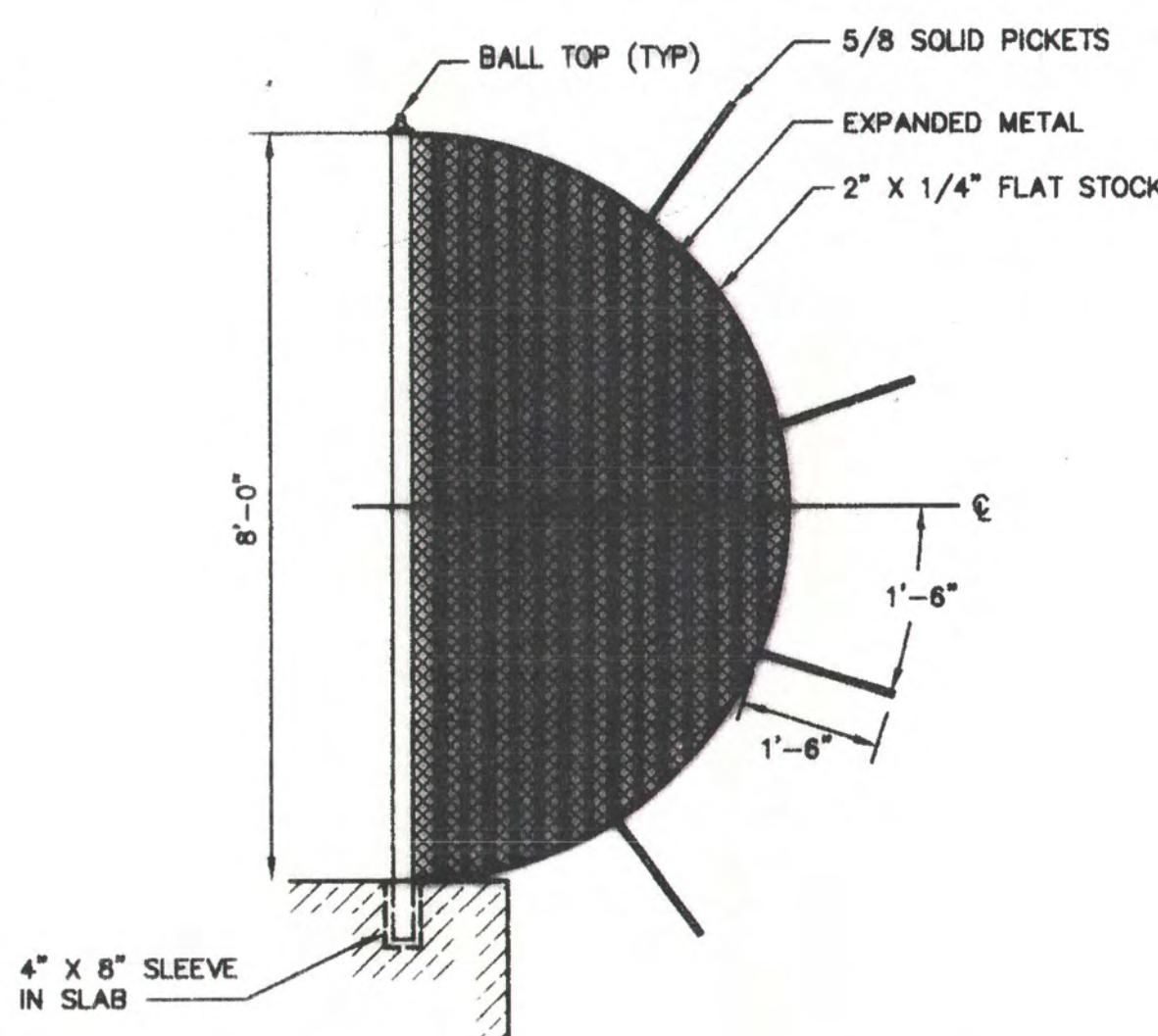
SECTION C-C  
SCALE: 1/4" = 1'-0"



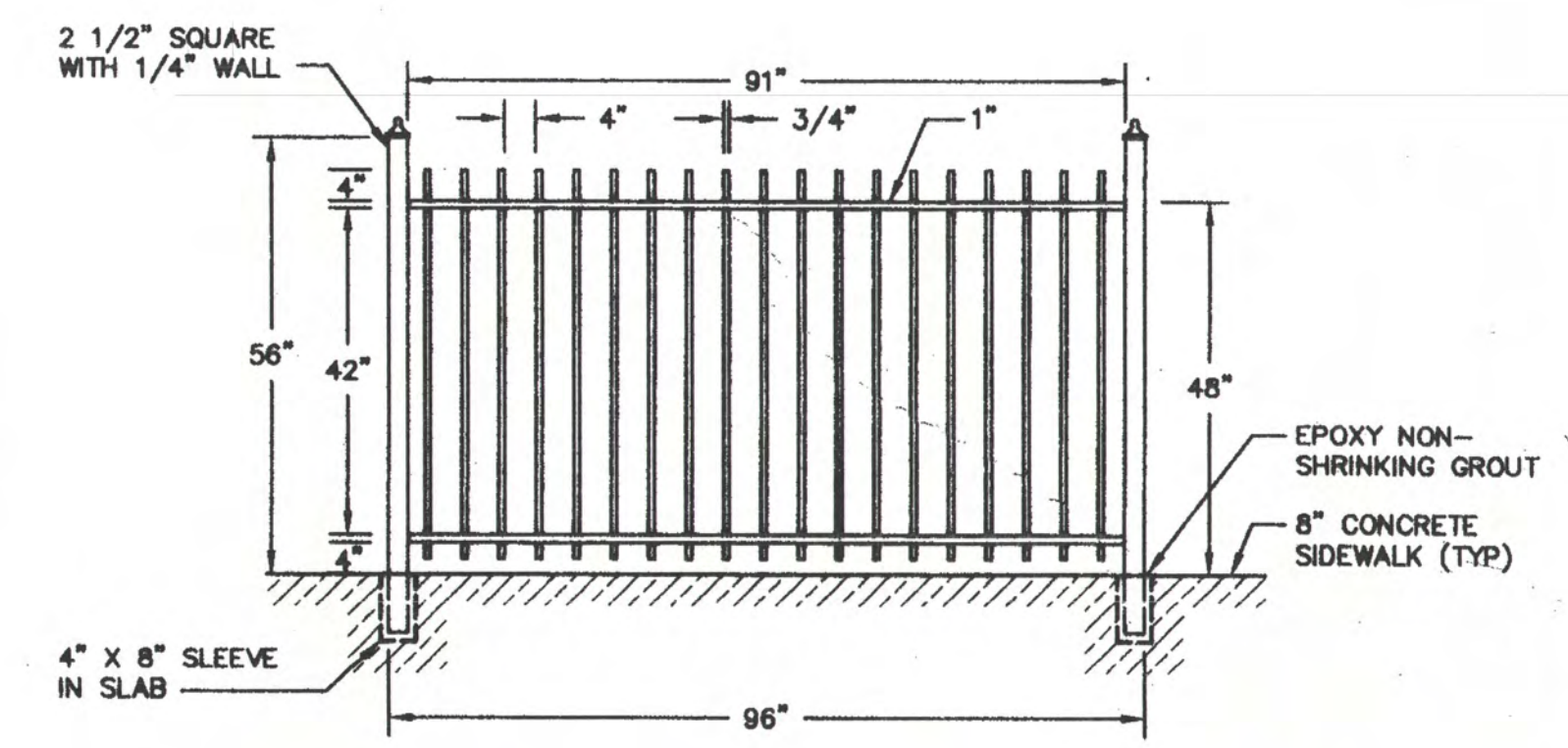
② CONCRETE COLUMN  
SCALE: 1/4" = 1'-0"



SECTION A-A  
SCALE: 1/2" = 1'-0"



SECTION D-D  
SCALE: 1/2" = 1'-0"



③ FENCE PANEL 4' HIGH X 8" WIDE  
SCALE: 1/2" = 1'-0"

1	11/30/00	FOR CONSTRUCTION	AWM
A	10/12/00	FOR BIDDING	AWM
NO.	DATE	DESCRIPTION	BY
ISSUES / REVISIONS			

CHICAGO PARK DISTRICT

**McCURR, Ltd.**  
consulting engineers  
951-955 West Liberty Drive  
Wheaton, IL 60187-4846 630-665-1170

TITLE  
**DOCK GATES AND FENCE**  
BURNHAM HARBOR  
Chicago, Illinois

JOB NO.	161.0010	DRAWN BY	JG
SCALE	AS NOTED	REVIEWED BY	AWM
		DWG. NO.	.../A/GATE_FENCE
		SHEET	

C7  
OF

C:\Land Projects\161.0010\dwg\01GATE\_FENCE.dwg Thu Nov 30 17:03:06 2000

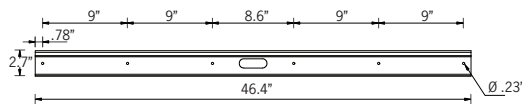


# UCN-30081

## Gini 1 Downlight



72w LED 4984 Lumens  
IP65 • Suitable For Wet Locations  
IK07 • Impact Resistant  
Weight 30.6 lbs



### Mounting Detail



### Construction

#### Aluminum

Less than 0.1% copper content - Marine Grade 6060 extruded & LM6 Aluminum High Pressure die casting provides excellent mechanical strength, clean detailed product lines and excellent heat dissipation.

#### Pre paint

8 step degrease and phosphate process that includes deoxidizing and etching as well as a zinc and nickel phosphate process before product painting.

#### Memory Retentive - Silicon Gasket

Provided with special injection molded "fit for purpose" long life high temperature memory retentive silicon gaskets. Maintains the gaskets exact profile and seal over years of use and compression.

#### Thermal management

LM6 Aluminum is used for its excellent mechanical strength and thermal dissipation properties in low and high ambient temperatures. The superior thermal heat sink design by Ligman used in conjunction with the driver, controls thermals below critical temperature range to ensure maximum luminous flux output, as well as providing long LED service life and ensuring less than 10% lumen depreciation at 50,000 hours.

#### Surge Suppression

Standard 10kv surge suppressor provided with all fixtures.

#### BUG Rating

B2 - U1 - G1

#### Finishing

All Ligman products go through an extensive finishing process that includes fettling to improve paint adherence.

#### Paint

UV Stabilized 4.9mil thick powder coat paint and baked at 200 Deg C. This process ensures that Ligman products can withstand harsh environments. Rated for use in natatoriums.

#### Inspired by Nature Finishes

The Inspired by nature Finishing is a unique system of decorative powder coating. Our metal decoration process can easily transform the appearance of metal or aluminum product into a wood grain finish.

This patented technology enables the simulation of wood grain, and even marble or granite finish through the use of decorative powder coating.

The wood grain finish is so realistic that it's almost undistinguishable from real wood, even from a close visual inspection. The system of coating permeates the entire thickness of the coat and as a result, the coating cannot be removed by normal rubbing, chipping, or scratching.

#### The Coating Process

After pre-treatment the prepared parts are powder coated with a specially formulated polyurethane powder. This powder provides protection against wear, abrasion, impact and corrosion and acts as the relief base color for the finalized metal decoration.

The component is then wrapped with a sheet of non-porous film with the selected decoration pattern printed on it using special high temperature inks.

This printed film transfer is vacuum-sealed to the surface for a complete thermo print and then transferred into a customized oven. The oven transforms the ink into different forms within the paint layer before it becomes solid. Finally, the film is removed, and a vivid timber look on aluminum remains.

Wood grain coating can create beautiful wood-looking products of any sort. There are over 300 combinations of designs currently in use. Wood grains can be made with different colors, designs, etc.

Our powder coatings are certified for indoor and outdoor applications and are backed by a comprehensive warranty. These coatings rise to the highest conceivable standard of performance excellence and design innovation.

#### Added Benefits

- Resistance to salt-acid room, accelerated aging
- Boiling water, lime and condensed water resistant
- Anti-Graffiti, Anti-Slip, Anti-Microbial, Anti-Scratch
- Super durable (UV resistant)
- TGIC free (non-toxic)

#### Hardware

Provided Hardware is Marine grade 316 Stainless steel.

#### Anti Seize Screw Holes

Tapped holes are infused with a special anti seize compound designed to prevent seizure of threaded connections, due to electrolysis from heat, corrosive atmospheres and moisture.

#### Crystal Clear Low Iron Glass Lens

Provided with tempered, impact resistant crystal clear low iron glass ensuring no green glass tinge.

#### Optics & LED

Precise optic design provides exceptional light control and precise distribution of light. LED CRI > 80

#### Lumen - Maintenance Life

L80 /B10 at 50,000 hours (This means that at least 90% of the LED still achieve 80% of their original flux)

**Slimline, surface wall-fixtures with up-down-light distribution. Clean, unique, minimalistic and flexible, the perfect tool for surface wall grazing.**

A range of modular top quality decorative linear surface mount luminaires. This small profile decorative wall scone with upward, downward or up/down light distributions is available in 4 sizes, namely 12", 23" 35" and 47" standard lengths. (Contact factory for longer runs)

This luminaire has a unique feature where the extruded aluminum mounting bracket is secured onto the wall and the luminaire are then attached to the mounting bracket.

This modular feature allows for extended lengths of extruded mounting bracket to be installed onto the wall and then multiple luminaires can be attached end-on-end to provide a continuous row of luminaires with even light distribution. The Gini has been designed with integral drivers and lightly frosted low glare tempered glass lenses. A single gang in wall junction box, horizontally mounted is to be provided by contractor to facilitate ease of installation.

This IP65 luminaire can be used for indoor, as well as outdoor applications. Ideally suited to illuminate wall surfaces and light accents.





PROJECT					DATE	
QUANTITY		TYPE		NOTE		

ORDERING EXAMPLE || UGN - 30081 - 72w - W30 - 02 - 120/277v - Options

UGN-30081				
LAMP	LED COLOR	FINISH COLOR	VOLTAGE	
72w LED 4984 Lumens	W27 - 2700K W30 - 3000K W35 - 3500K W40 - 4000K	01 - BLACK RAL 9011 02 - DARK GREY RAL 7043 03 - WHITE RAL 9003 04 - METALLIC SILVER RAL 9006 05 - MATTE SILVER RAL 9006 06 - LIGMAN BRONZE 07 - CUSTOM RAL	120/277v	
<div>INSPIRED BY NATURE FINISHES</div> <div>SW01 - OAK FINISH SW02 - WALNUT FINISH SW03- PINE FINISH DF - DOUGLAS FIR FINISH CW - CHERRY WOOD FINISH NW - NATIONAL WALNUT FINISH SU01 - CONCRETE FINISH SU02 - SOFTSCAPE FINISH SU03 - STONE FINISH SU04 - CORTEN FINISH</div> <div>THERE IS AN ADDITIONAL COST FOR THESE FINISHES</div>				

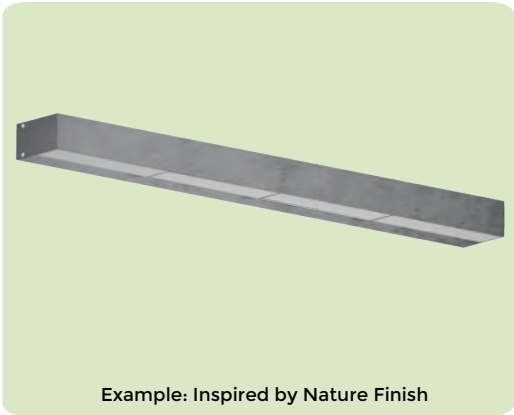
ADDITIONAL OPTIONS	

NAT - Natatorium Rated  
DIM - 0-10v Dimming

More Custom Finishes Available Upon Request

Consult factory for pricing and lead times

<div>Oak</div>	<div>Cherry</div>	<div>Beech</div>	<div>Carbon</div>
<div>Walnut</div>	<div>Chestnut</div>	<div>Bamboo</div>	<div>Galvanized</div>
<div>Pine</div>	<div>Mahogany</div>	<div>Birch</div>	<div>Steel</div>



Example: Inspired by Nature Finish



# Gini Product Family



Gini 1/2 - 11.8"

- UGN-30021-18w-1246lm - Down
- UGN-30031-2x12w-2x992lm - Up/Down



Gini 1/2 - 23.4"

- UGN-30041-36w-2492lm - Down
- UGN-30051-2x25w-2x1985lm - Up/Down



Gini 1/2 - 35.1"

- UGN-30061-54w-3738lm - Down
- UGN-30071-2x37w-2x2977lm - Up/Down



Gini 1/2 - 47"

- UGN-30081-72w-4984lm - Down
- UGN-30091-2x50w-2x3970lm - Up/Down



### EK4036S

#### Fix Mount Button Electronic Photo Control



The EK4036S is an electronic photo control that fits in a standard outlet box, post lamp or light fixture. It is made within dimensional guidelines in ANSI C136-24 to assure fit within a large variety of fixtures and features a silicon light sensor with zero-crossing circuit to provide a long service life.

#### Features

- Dusk-to-dawn control of outdoor lighting
- Floodlights and security lighting
- Ideal for LED fixtures totaling 1650 W @ 277 VAC
- Non-drifting silicon light sensor IR filtered for human eye response
- Zero-cross technology helps device withstand severe inrush current and extends relay life
- Exceeds 10,000 ON/OFF operations at full load to match life expectancy of LED fixtures
- All components meet 15-year life requirements

#### Regulatory Listings

- ANSI C136.24 compliant
- UL certified to U.S. (UL773A) & CSA certified to Canadian (C22.2 No. 55-M1986/ TIL A-15) safety standards

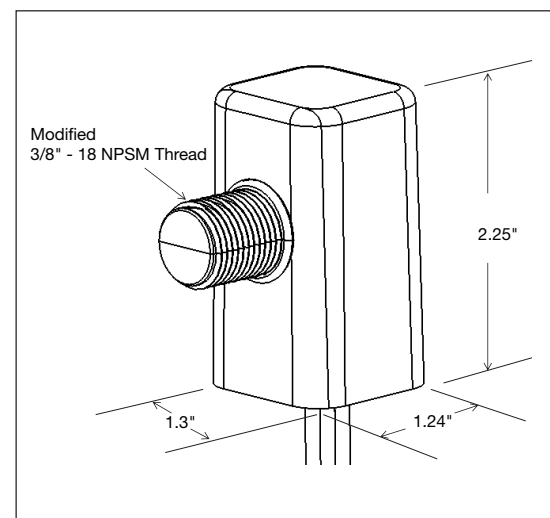
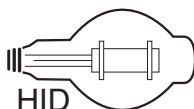
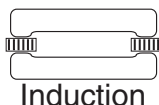
#### Operating Specifications

- Voltage: 105-305 VAC, 50/60Hz
- Dielectric strength: 2500 VAC
- Operating ambient temperature range: -40°F to 158°F (-40°C to 70°C)
- Instant turn ON light level 1.5 fc
- OFF light level: 2.25 fc
- Turn OFF to ON ratio 1.5:1 with 2-5 second delay
- Fail mode: ON
- Power consumption <.5W @ 277 VAC
- 255 Joule MOV surge protection component
- 9" long, 18 awg wire leads

#### Warranty

- Limited 8-year manufacturer's warranty

#### Compatible with

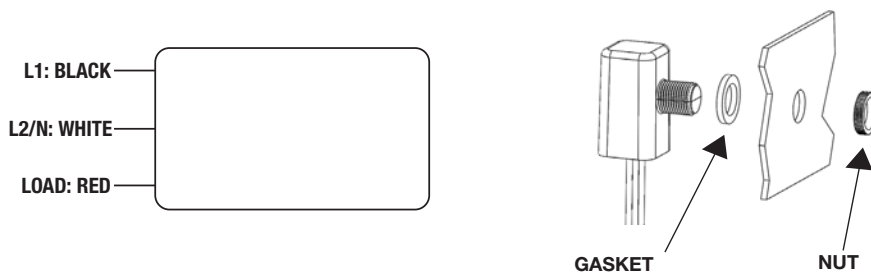


Model Number	Max VAC	Tungsten (Watts)	Ballast (VA)	Electronic Ballast (LED)	Turn ON Foot Candles (fc)	Turn OFF to ON Ratio	Fail Mode
EK4036S	105-305	1000	1800	6 Amps	1.5	1.5:1 with 2-5 second delay (2.25 fc OFF)	ON

## Specification

The photo control shall be an electronic control based on a solid-state photo sensor and relay switch circuit. Switch operation shall have a rating of 1000 Watts tungsten and 1800 Watts ballast at 105-305 VAC. For high inrush LED type fixtures, the photo control switch operation shall have a 6 Amp Electronic Ballast rating at 105-305 VAC. The photo control shall fail in an ON state. The photo control operating voltage shall be clearly identified on the control housing. The photo control shall be equipped with inherent delay action eliminating activation by light flashes. The photo control overall dimensions should meet guidelines in ANSI C136.24 and have 9" long, 18 awg wire leads. The photo control shall consist of industrial grade electronic components; 255 Joule MOV, solid state light sensor, and silver alloy relay contacts. The photo control shall be 100% factory tested and function within specified light levels. The photo control shall be agency certified and tested accordingly. The photo control shall meet agency standards and all other requirements of ANSI C136.24. The photo control shall operate over a temperature range of -40°F to 158°F (-40°C to 70°C). The photo control shall have a manufacturer's limited warranty of 8 years minimum. The photo control shall be the electronic dusk-to-dawn type, Intermatic model EK4036S.

## Diagrams



## Limited Product Warranty

### (1) What is Covered By This Limited Warranty?

Intermatic Incorporated ("Intermatic") warrants Intermatic's EK4036S ("Product") to be free from defects in material or workmanship for a period of eight (8) years from date of purchase. This warranty is extended to the owner of the light fixture on which the photo control is installed only and it is not transferable ("purchaser"). If the purchaser discovers a defect in material or workmanship, the purchaser must promptly submit a warranty claim. Upon a determination by Intermatic that the Product is defective, Intermatic shall correct any defect in material or workmanship by replacing the Defective Product. Any repair to Product, including both parts and labor, shall be at Intermatic's expense. The foregoing remedy is the purchaser's exclusive remedy for a breach of warranty. The product must be installed in the appropriate application in complete accordance with the installation instructions. The Product must not be opened, modified, exposed to extreme heat or cold, submerged or subjected to abnormal use or service. Product failures due to damage by accident, dropping, or abuse in handling, acts of God, or any negligent use, are not covered by this warranty. Intermatic shall determine, in its sole discretion, whether any Product returned by a purchaser has been used in accordance with its instructions, is an appropriate model for the purchaser's use thereof, and whether the Product is defective.

### (2) Disclaimer of Warranty

THE FOREGOING WARRANTIES ARE IN LIEU OF ALL OTHER EXPRESSED WARRANTIES. TO THE EXTENT ALLOWED BY LAW, ANY IMPLIED WARRANTIES OF MERCHANTABILITY OR FITNESS FOR A PARTICULAR PURPOSE ARE LIMITED IN DURATION OF THIS LIMITED WARRANTY.

### (3) Limitation of Remedies

IN NO CASE SHALL INTERMATIC BE LIABLE FOR ANY SPECIAL, INCIDENTAL, OR CONSEQUENTIAL DAMAGES BASED UPON BREACH OF WARRANTY, BREACH OF CONTRACT, NEGLIGENCE, STRICT TORT, OR ANY OTHER LEGAL THEORY. SUCH EXCLUDED DAMAGES INCLUDE, BUT ARE NOT LIMITED TO, DAMAGE TO SOFTWARE, LOSS OF DATA, LOSS OF PROFITS, LOSS OF SAVINGS OR REVENUE, LOSS OF USE OF THE PRODUCT OR ANY ASSOCIATED EQUIPMENT, COST OF CAPITAL, COST OF ANY SUBSTITUTE EQUIPMENT, FACILITIES OR SERVICES, DOWNTIME, THE CLAIMS OF THIRD PARTIES INCLUDING CUSTOMERS, DAMAGE TO PROPERTY AND PERSONAL INJURY. SOME STATES DO NOT ALLOW LIMITS ON WARRANTIES OR ON REMEDIES FOR BREACH IN CERTAIN TRANSACTIONS, IN SUCH STATES, THE LIMITS IN THIS PARAGRAPH AND IN PARAGRAPH (2) MAY NOT APPLY.

### (4) Time Limit for Bringing Suit

No action arising out of any claimed breach of warranty may be brought more than one year after the cause of action has occurred.

### (5) No Other Warranties

Unless modified in writing signed by both parties, this agreement is understood to be the complete and exclusive agreement between the parties, superseding all prior agreements, oral or written, and all other communications between the parties relating to the subject matter of this agreement. No employee of Intermatic or any other party is authorized to make any warranty in addition to those made in this agreement. This warranty is made by: Intermatic Incorporated/After Sales Service, 7777 Winn Rd., Spring Grove, IL. 60081-9698/815-675-7000 <http://www.intermatic.com>

### (6) Claim Procedure

The warranty service is available by either (a) returning the product to the dealer from whom the unit was purchased, or (b) mailing the product, along with proof of purchase, postage prepaid, to the authorized service center listed below.

Address all communications and products returns to:

Intermatic Warranty Coordinator

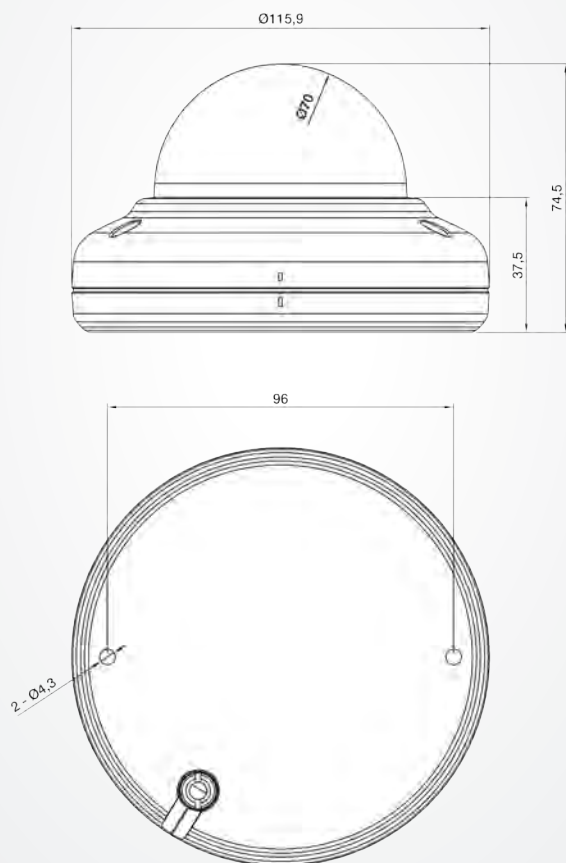
7777 Winn Road Spring Grove, Illinois 60081-9698, Fax: 815-675-7055



# 1080p HD IR Compact Camera

## 2.1 Megapixel IP Micro Dome with IR

## Video Security



Amano reserves the right to change specifications without prior notice. Revision 1012

### WARRANTY:

Amano warrants this product against defects in material and workmanship under normal use and service for 36 months from the date of shipment. Full warranty statement available on request.

## SPECIFICATIONS

### CAMERA

Image Sensor	SONY EXMOR 1/2.9" 1080p CMOS
Effective Pixels	1920 x 1080
AGC Control	Auto
Minimum Illumination	Color: 0.5 Lux / B/W: 0 Lux (IR LED On)
Lens	3.6mm, F2.0
Field of View	Horizontal: approx. 87°; Vertical: approx. 47°
Shutter Time	1/10,000s to 1/2s
Noise Filter	Supported (0 - 3)
Day & Night	True day & night (removable IR-cut filter)
Focus Assist	Supported
BLC	On (possible to designate zone) / off
Wide Dynamic Range	Digital WDR
Exposure Adjustment	+1.0, +0.6, +0.3, 0, -0.3, -0.6, -1.0 EV
IR LEDs	IR LED x 8 (850nm)
IR Range	10m (30IRE)
SMART IR	Supported
ONVIF Compliance	Profile S, Profile G

### VIDEO

Compression Format	H.264 baseline, main, high profile (MPEG-4 Part 10/AVC), MJPEG (Motion JPEG)
Number of Streams	Dual stream, configurable streams in H.264, MJPEG
Resolution 16:9 mode	1920 x 1080, 1280 x 720, 1120 x 630, 960 x 540, 800 x 450, 640 x 360, 480 x 270, 320 x 180
Resolution 4:3 mode	SXGA(1280x960), XGA(1024x768), SVGA(800x600), PAL(720x576), NTSC(720x480), VGA(620x480), QVGA(320x240)
Frame Rate	Max 30fps in all resolution
Smart Bitrate Control	Supported (works in VBR mode)
Orientation Control	Flip/mirror/corridor mode(-90°, +90°)
Burnt-in Text (Digital)	Time stamp and text caption overlay
Privacy Mask	4 configurable regions
Flicker Control	Normal, 50Hz, 60Hz
Analog Output	None

### AUDIO

Input/Output	None
--------------	------

### PERIPHERAL

Digital Input/Output	None
Ethernet Standard	10/100 BaseT
IP	IPv4, IPv6
Protocol	QoS Layer 3 DiffServ, TCP/IP, UDP/IP, HTTP, HTTPS, FTP, RTSP, RTP, RTCP, RTP/UDP, RTP/TCP, mDNS, UPnP™, SMTP, DHCP, DNS, DynDNS, NTP, SNMPv1/v2c/v3(MIB-II), IGMP, ICMP, SSLv2/v3, TLSv1, SRTP, RTM
Security	HTTPS(SSL), IP filtering, multi-level access with password protection

### EDGE STORAGE

Storage	1x MicroSD/MicroSDHC memory card slot (card not included)*
Recording Types	Continuous recording; instant recording; search & download Event recording: search of event logs; playback; download

### ELECTRICAL

Power Source	DC 12V, PoE
Power Consumption	4.2W @ DC 12V

### ENVIRONMENTAL

Operating Temperature	-20°C - 50°C (-4°F - 122°F)
Operating Humidity	Up to 85% RH (non-condensing)

### MECHANICAL

Material	Aluminum Die-Casting
Color	Ivory
Weight	300g (0.66 lbs)

### VIDEO ANALYTICS (INCLUDED)

Analytics Engine	VCA Technology's advanced tracking algorithm with rich library of detection behaviors; some engines require additional licensing
User Interface	Web browser interface
Detection Zones	40 zones, multi-segment polygons and lines, 60 rules in total

### ORDERING INFORMATION

CAO-EDH-62-11IR	1080p HD IR Compact Dome Camera
-----------------	---------------------------------

### MOUNTING HARDWARE OPTIONS

PMC-362	Pendant Mount Cap
WMB-3000P	Wall Mount Bracket
CMP-3000P	Ceiling Mount Bracket

**AMANO McGANN**

# 1080p HD IR Compact Camera

2.1 Megapixel IP Micro Dome with IR

## Video Security

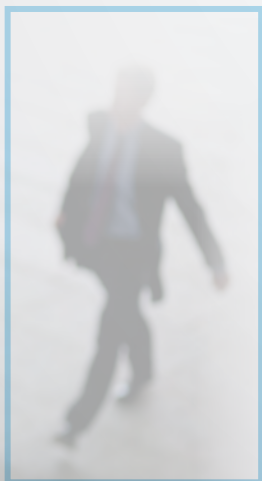


Amano high-definition indoor cameras offer a superior solution to every day surveillance needs.

The latest design with an advanced feature set, embedded Video Analytics and infrared illumination in a small form factor provide uncompromised security in a reliable and cost-effective package.

### Features

- Full HD 1080p 30fps
- H.264 and MJPEG compression
- True day/night and WDR
- Built-in IR illuminator with 10m (33ft) viewing distance
- Embedded VCA technology Video Analytics
- MicroSD/SDHC memory card slot
- Power over Ethernet (IEEE 802.3af)





# Amano WMK

## Wiegand Metal Keypad Reader

### KEY FEATURES

- ◆ Communications distance of up to 500 feet (150 m).
- ◆ Suitable for OEM developments.
- ◆ Multiple Wiegand output formats (26-bit and 44-bit).
- ◆ Read capability from various tag types: Slim Tags, Omega Tags, Amano Trinary Tags (1074 and 2074) and HID Tags (H10301, H10302 and H10304).
- ◆ A single tri-colored Red, Green or Amber Status LED.
- ◆ A 4 kHz piezo-electric Buzzer.
- ◆ 12-Button alphanumeric keypad
- ◆ An external Wiegand communications bus interface.
- ◆ Dual input voltage types supported (5 V DC and 12 V DC).
- ◆ Programmable facility code for use with PIN-code entry.



**Amano WMK Metal Keypad Reader**

### PHYSICAL SPECIFICATIONS

Dimensions (H x W x D)	5.59" x 2.99" x 1.06" (142mm x 76mm x 27mm)
Weight	18 oz (513g)
Housing Material	Die-cast Zinc Alloy.
Color	Satin Nickel powder coated

### ENVIRONMENTAL SPECIFICATIONS

Operating Temperature	-13°F to +140°F (-25°C to +60°C)
Storage Temperature	-40°F to +176°F (-40°C to +80°C)
Humidity Range	0 to 95% relative humidity at +104°F (+40°C) non-condensing.
CE Approval	EN301 489-3, EN301 489-1 and EN300 330-1.
FCC Approval	Pending.
Dust & Splash Resistance	Designed to work in harsh (industrial) indoor or outdoor environments similar to IP53.

# AMANO®

## ELECTRICAL SPECIFICATIONS

### POWER

Input Voltage Rating	5 V DC to 16 V DC, polarity sensitive.	
Power Requirements	Current (mA)	Power (W)
Supply Voltage 5 V DC all indicators on	50	0.25
Supply Voltage 12 V DC all indicators on	50	0.60
Permissible Input Supply Ripple Voltage (Max)	1 V pp at 50 Hz	
Power Input Protection	Reverse polarity protection is provided on the Reader.	

### PIN-CODES

Type	5 Digit codes in the range 00000 to 65535. 4 Digit codes in the range 0000# to 9999#.
------	--

### WIEGAND BUS

Electrical Interface	'0' and '1' data streams.
Tag Information Data Format	44-bit Wiegand or 26-bit Wiegand.
Key Information Data Format	26-bit Wiegand only.

### INPUTS

Quantity	4
Type	Dry Contact.
Function	Operation of the Buzzer, LED and Scanner Inhibit.

## USER INTERFACES

### BUZZER

Volume & Tone	4 kHz piezo-electric, single volume, single tone.
---------------	---

### KEYPAD

Keys	12 Alphanumeric keys.
------	-----------------------

### STATUS INDICATOR

Status LED	Tri-colored Red, Green or Amber (Default) (externally visible).
------------	---

## ORDERING INFORMATION

WMK900-1-0-AC Amano Metal Keypad Proximity Card Reader (Multi-mode)

Amano reserves the right to change specifications without prior notice.





AMANO WMK-900 Mounting Plate





















































Any Security Questions or Concerns  
Can be directed to the  
Harbor Security Supervisor  
6 PM - 6 AM Emergency Phone  
(212) 817-7837  
Your safety and security  
is our primary goal  
EMERGENCIES CALL 911





**Any Security Questions or Concerns**

Can be directed to the  
Harbor Security Supervisor  
6 PM - 6 AM Emergency Phone  
**(312) 617-7937**

Your safety and security  
is our primary goal

**EMERGENCIES CALL 911**

Hand  
Sanitizer

PUSH  
TO  
EXIT