



JACKSON OUTER HARBOR

SPECIFICATION NO. P16015-086

6400 SOUTH COAST GUARD DRIVE

CHICAGO, IL 60649

ISSUED FOR BID 08-06-2020

THE ALTERATE CONSISTS OF IMPROVEMENTS TO JACKSON OUTER HARBOR IN CHICAGO, IL. THE IMPROVEMENT INCLUDES THE CONSTRUCTION OF A NEW STEEL SHEET PILE WALL AND CONCRETE CAP. THE PARK IS NOT ON THE NATIONAL REGISTER OF HISTORIC PLACES.



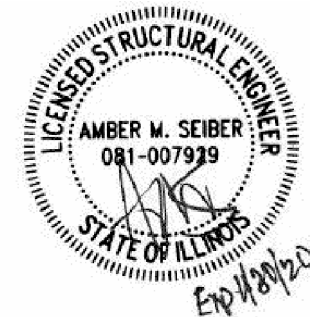
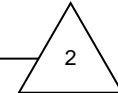
LOCATION MAP
NO SCALE



SITE MAP
NO SCALE

DRAWING INDEX

- 1 COVER SHEET
- 2 GENERAL NOTES
- 3 EXISTING PLAN
- 4 PROPOSED PLAN
- 5 GRADING PLAN
- 6 TYPICAL SECTION & DETAILS
- 7 STEEL DETAILS
- 8 EXISTING CONDITIONS
- 9 BORING LOGS
- 10 PEDESTRIAN DETOUR PLAN



SHEETS 1 TO 9



CHICAGO PARK DISTRICT
541 NORTH FAIRBANKS
Chicago, Illinois 60611

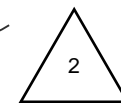
550 W. Jackson Blvd.
Suite 1200
Chicago, IL 60661
Tel: (312) 704-1300
Fax: (312) 704-1320
www.collinsengr.com
ILLINOIS PROFESSIONAL DESIGN FIRM LICENSE NO. 184-000993

E	
D	
C	
B	
A	8/19/2020
REVISIONS	DATE

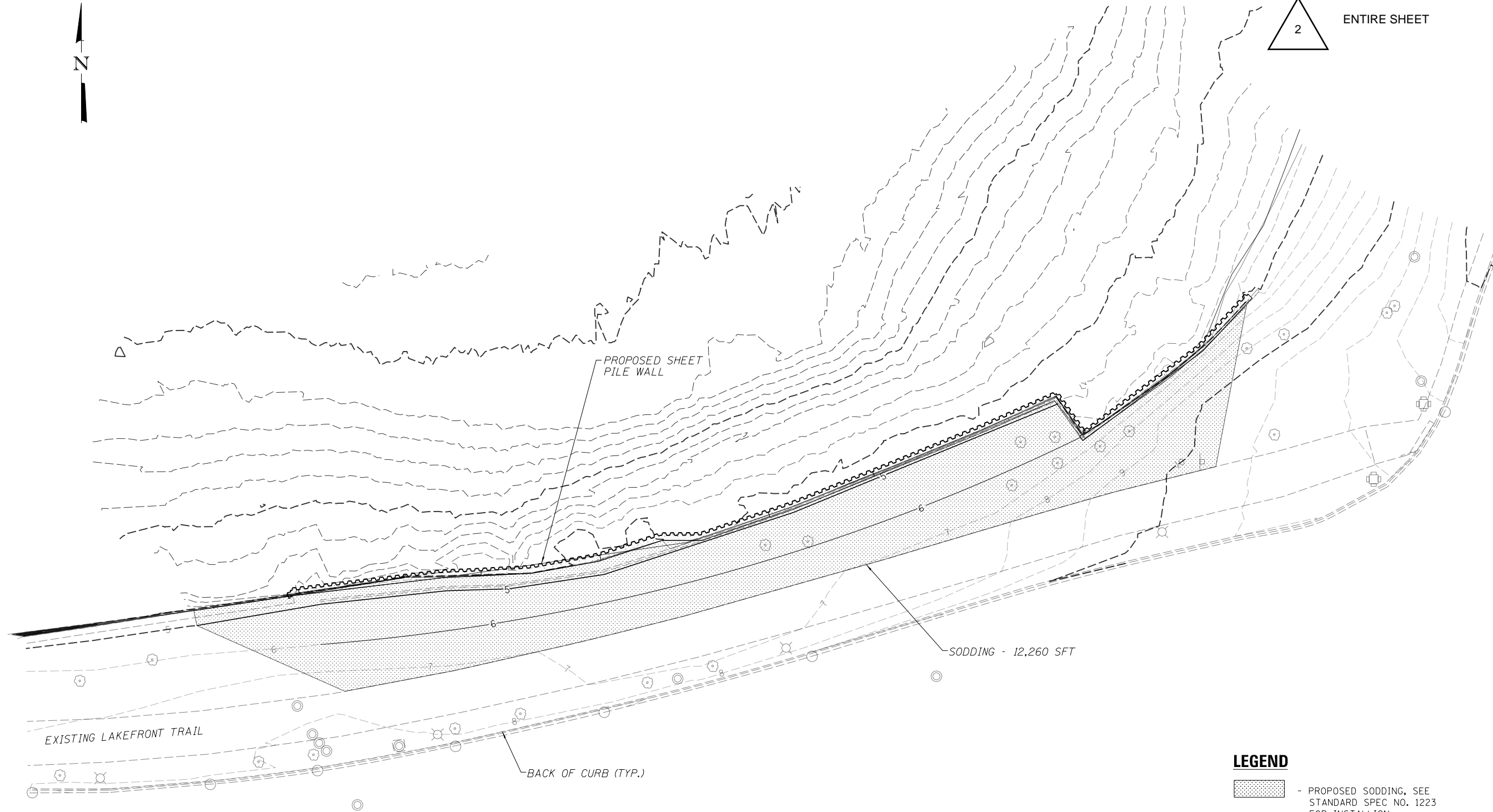
PROJECT MANAGER	
PROJECT MANAGER	
DIRECTOR OF ENGINEERING	
PROJ. MGR.: AMS	
DESIGNER: ELN	
DRAWN: ELN	
CHECKED: AMS	
SCALE: As Shown	
DATE: 07/31/2020	
SPEC. NO.: P16015-086	
JOB NO.: 7416.04	
SHEET INFORMATION	

JACKSON OUTER HARBOR	COVER SHEET
----------------------	-------------

PARK NO./PROJECT NO.	PARK 0019 16015-086
01	DRAWING NO.
© CHICAGO PARK DISTRICT	



ENTIRE SHEET



CHICAGO
PARK
DISTRICT

541 NORTH FAIRBANKS
Chicago, Illinois 60611

DB STERLIN CONSULTANTS, INC.
123 N. WACKER DRIVE SUITE 2000
CHICAGO, ILLINOIS 60606
TEL. (312) 857-1006 FAX. (312) 857-1056



E	
D	
C	
B	
A	8/19/2020
REVISIONS	DATE

PROJECT MANAGER
PROJECT MANAGER
DIRECTOR OF ENGINEERING

PROJ. MGR.: AMS
DESIGNER: MTM
DRAWN: MTM
CHECKED: AMS
SCALE: As Shown
DATE: 07/17/2020
SPEC. NO.: P16015-086
JOB NO.: 7416.04

SHEET INFORMATION

JACKSON OUTER HARBOR
GRADING PLAN

PARK NO./PROJECT NO.

PARK 0019
16015-086

05

DRAWING NO.
© CHICAGO PARK DISTRICT



CHICAGO
PARK
DISTRICT

541 NORTH FAIRBANKS
Chicago, Illinois
60611

550 W. Jackson Blvd.
Suite 1200
Chicago, IL 60661
Tel: (312) 704-1300
Fax: (312) 704-5320
www.collinsengr.com
ILLINOIS PROFESSIONAL DESIGN FIRM LICENSE NO. 184-000993

E	
D	
C	
B	
A	8/19/2020
REVISIONS	DATE

PROJECT MANAGER
PROJECT MANAGER
DIRECTOR OF ENGINEERING

PROJ. MGR.: AMS
DESIGNER: ELN
DRAWN: ELN
CHECKED: AMS
SCALE: As Shown
DATE: 07/31/2020
SPEC. NO.: P16015-086
JOB NO.: 7416.04

SHEET INFORMATION

JACKSON OUTER HARBOR
SECTION & DETAILS

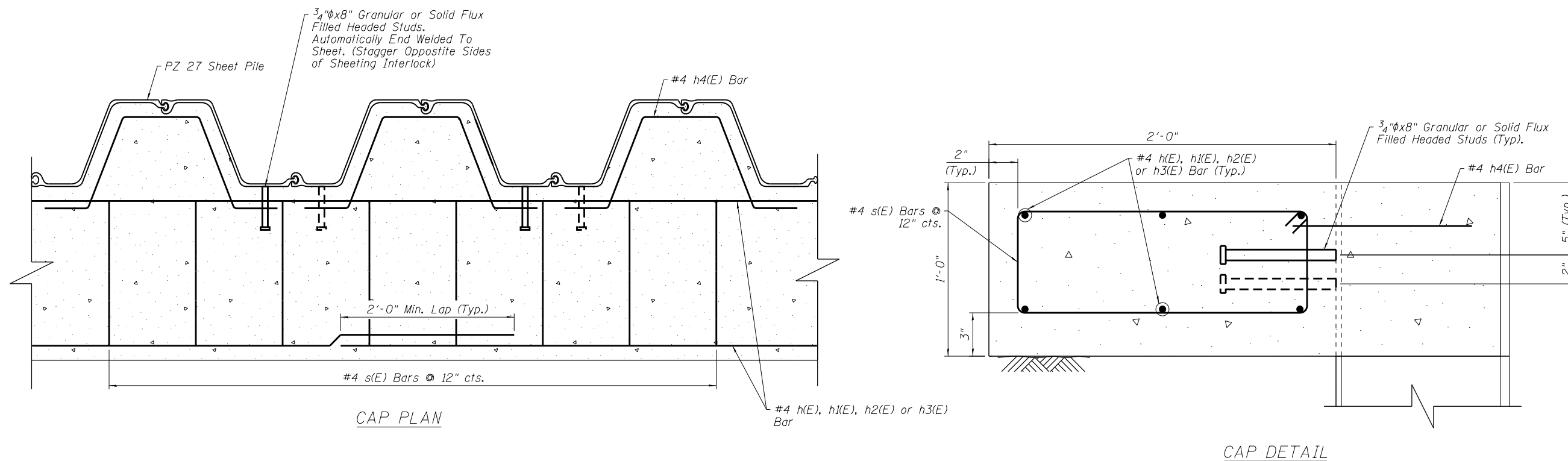
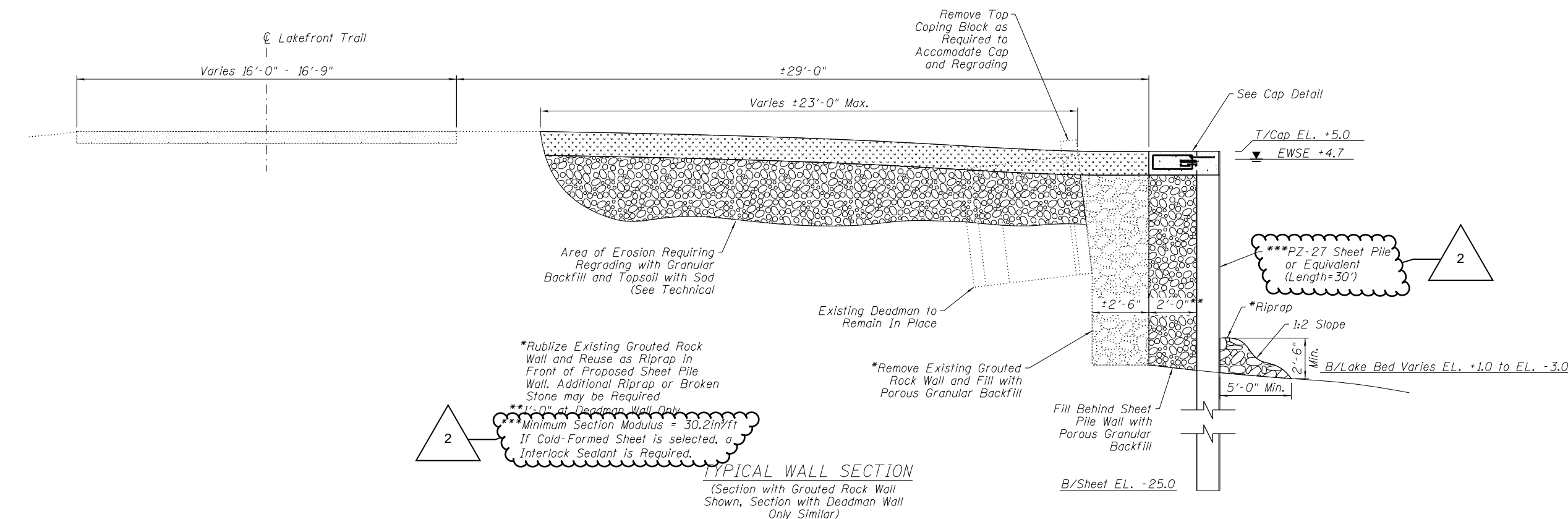
PARK NO./PROJECT NO.

PARK 0019
16015-086

06

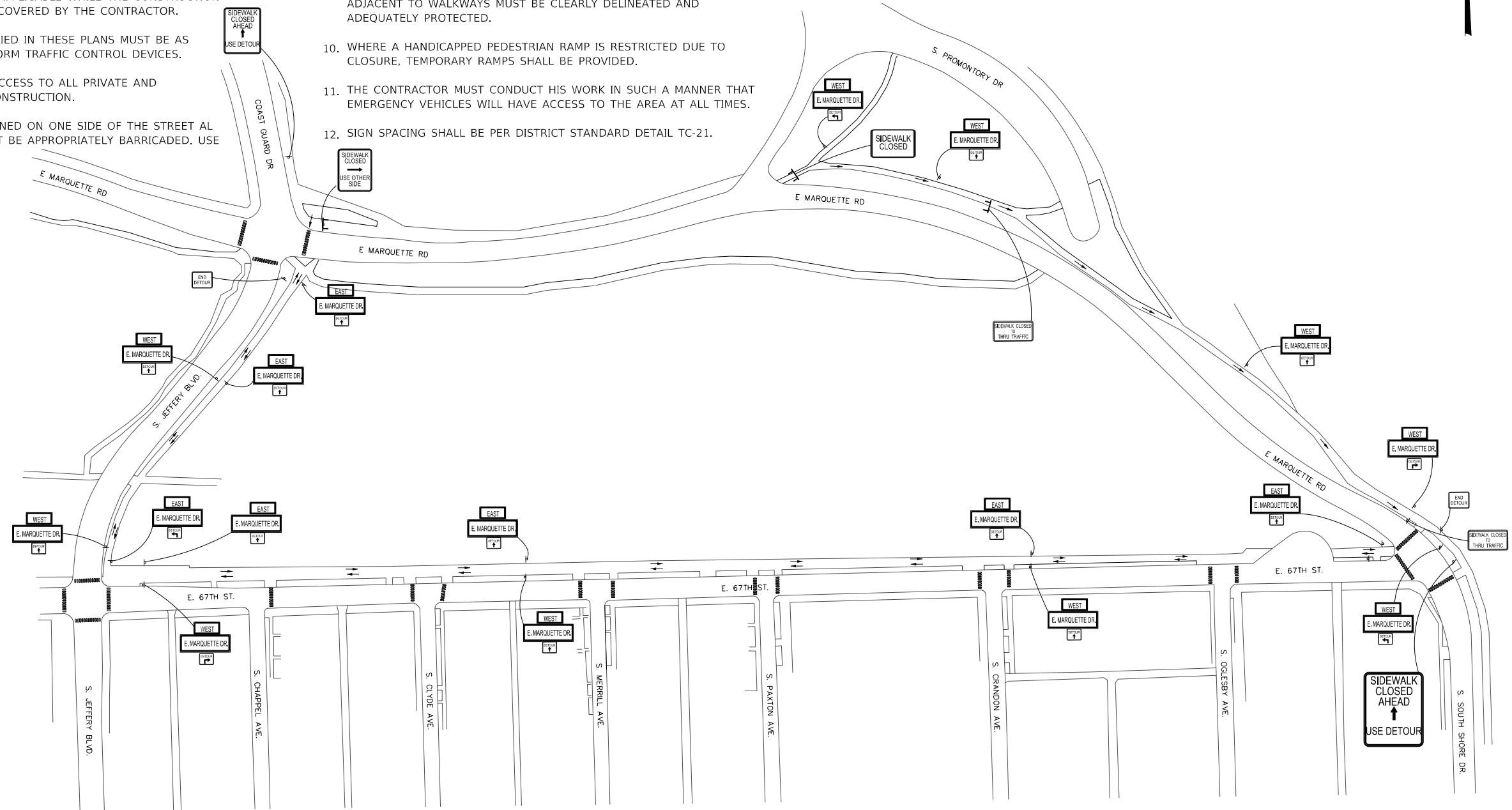
DRAWING NO.

© CHICAGO PARK DISTRICT



1. ALL SIGNING MUST BE IN ACCORDANCE WITH THE APPLICABLE PROVISIONS OF THE STATE OF ILLINOIS "STANDARD SPECIFICATIONS FOR ROAD AND BRIDGE CONSTRUCTION" LATEST EDITION. THE DETAILS IN THESE PLANS, THE LATEST EDITION OF THE IDOT BUREAU OF DESIGN AND ENVIRONMENT HIGHWAY STANDARDS AND THE LATEST EDITION OF THE "MANUAL ON UNIFORM TRAFFIC CONTROL DEVICES".
2. THE CONTRACTOR MUST BE RESPONSIBLE FOR ENSURING THAT ALL BARRICADES, SIGNS, LIGHTS AND OTHER DEVICES INSTALLED BY HIM ARE IN PLACE AND OPERATING 24 HOURS EACH DAY INCLUDING SUNDAYS AND HOLIDAYS DURING THE TIME THIS CONSTRUCTION IS IN EFFECT.
3. ALL EXISTING SIGNING THAT IS NOT APPLICABLE WHILE THE CONSTRUCTION IS IN EFFECT MUST BE COMPLETELY COVERED BY THE CONTRACTOR.
4. THE SIZES OF ALL SIGNS NOT SPECIFIED IN THESE PLANS MUST BE AS REQUIRED BY THE MANUAL ON UNIFORM TRAFFIC CONTROL DEVICES.
5. THE CONTRACTOR MUST MAINTAIN ACCESS TO ALL PRIVATE AND COMMERCIAL DRIVEWAYS DURING CONSTRUCTION.
6. SIDEWALK ACCESS MUST BE MAINTAINED ON ONE SIDE OF THE STREET AT ALL TIMES. CLOSED SIDEWALKS MUST BE APPROPRIATELY BARRICADED. USE STANDARD 701801.

7. THE "SIDEWALK CLOSED / USE OTHER SIDE" SIGN MUST BE PLACED AT THE NEAREST CROSSWALK OR INTERSECTION TO EACH END OF THE CLOSURE. WHEN THE CLOSURE OCCURS AT A CORNER, THE SIGNS MUST BE ERRECTED ON THE CORNER ACROSS THE STREET FROM THE CLOSURE. THE "SIDEWALK CLOSED" SIGNS MUST BE USED AT THE ENDS OF THE ACTUAL CLOSURES.
8. ALL WALKWAYS MUST BE CLEARLY IDENTIFIED AND ADEQUATELY PROTECTED FROM MOTOR VEHICLE TRAFFIC AND FREE OF ANY OBSTRUCTIONS AND HAZARDS SUCH AS HOLES, DEBRIS, MUD, CONSTRUCTION EQUIPMENT, STORED MATERIALS, ETC.
9. ALL HAZARDS, DITCHES, TRENCHES, EXCAVATIONS, ETC. NEAR OR ADJACENT TO WALKWAYS MUST BE CLEARLY DELINEATED AND ADEQUATELY PROTECTED.
10. WHERE A HANDICAPPED PEDESTRIAN RAMP IS RESTRICTED DUE TO CLOSURE, TEMPORARY RAMPS SHALL BE PROVIDED.
11. THE CONTRACTOR MUST CONDUCT HIS WORK IN SUCH A MANNER THAT EMERGENCY VEHICLES WILL HAVE ACCESS TO THE AREA AT ALL TIMES.
12. SIGN SPACING SHALL BE PER DISTRICT STANDARD DETAIL TC-21.



→ - DETOUR ROUTE